



COMMUNITY CARE



NATIONAL CODE: CHC62015

ADVANCED DIPLOMA OF COMMUNITY SECTOR MANAGEMENT

Elevate your impact with the Advanced Diploma of Community Sector Management, a qualification for leaders driving quality and compliance in community services and not-for-profit organisations.

CAMPUSES

BRISBANE CENTRE CAMPUS (316 ADELAIDE ST)

GOLD COAST CENTRE 2 CAMPUS

OVERVIEW



INTAKES
Monthly



DURATION
32 weeks



INDUSTRY PLACEMENT
140 hours



INTERNATIONAL STUDENTS
Yes



CRICOS CODE:
105311A



CONTACT HOURS
0

 Blended learning (Part On-Campus & Online)

ADVANCED DIPLOMA OF COMMUNITY SECTOR MANAGEMENT

About this Course:

This course equips you with the knowledge, practical skills, and experience needed to effectively lead and manage teams, make informed decisions, and drive organisational success. Through this qualification, you'll develop key competencies in communication, critical thinking, and emotional intelligence, preparing you to handle complex challenges and lead with confidence.

What You'll Learn

- Designing, Implementing & Evaluating Workforce Learning in Community Services
- Enabling Holistic Team Development & Wellbeing
- Managing & Maintaining Legal, Ethical & Safeguarding Compliance
- Leadership Excellence & Core Service Management Responsibilities

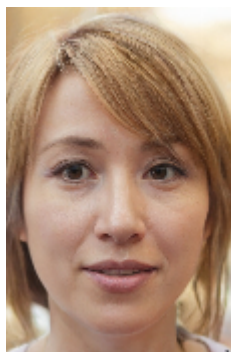
Career Outcomes

SERVICE MANAGER

PROGRAM SUPERVISOR

TEAM LEADER

TEAM COORDINATOR



Emily
"The cultural experiences, especially exploring Brisbane and the Gold Coast, were amazing! The tour concierge made the entire experience smooth and enjoyable."



Michael
"The tour was well organized and provided great opportunities for both personal and academic growth. The hands-on learning made all the difference!"

INTAKE DATES

TBA - Expressions of Interest

TUITION FEES (DOMESTIC FEE FOR SERVICE)

Course Name	Course Duration	Domestic Fee for Service	Campus Availability	Intakes
Advanced Diploma of Community Sector Management	32 weeks	\$0	BNECTR2	Monthly

ENTRY REQUIREMENTS

AGE	GRADE	IELTS
18	12	5.5

■ AGE

Minimum age of 18 years or turning 18 years old prior to commencement of the course

■ EDUCATION & EXPERIENCE REQUIREMENTS

Year 12 Australian Senior High School Certificate, or equivalent (e.g. completion of Year 12 or High School in the students home country) with full academic results.

■ ENGLISH LANGUAGE

Upper-Intermediate English (equivalent to 5.5 academic or general IELTS) and successful completion of college LLN Test

■ REQUIRED IDENTIFICATION

Photo ID and evidence of citizenship (international students must provide copy of passport)

■ COMPUTER SKILLS & EQUIPMENT

Students on this course require computer access for learning purposes and to complete course assessments. As such, learners must have beginner/intermediate computing skills including use of Microsoft Office programmes, in addition to hardware requirements of a desktop or portable computer with keyboard, pointing device, speaker, web camera and microphone, and a broadband internet connection.

■ ADDITIONAL REQUIREMENTS

Students must be eligible to hold a Blue Card (must not have a criminal record). Applicants for this course must be able to make themselves available to undertake the industry placement that forms part of the training and assessment activity. Students should be fully vaccinated against COVID19 prior to undertaking placement.

■ FURTHER INFORMATION

Students who are unable to meet the academic or English language criteria may in some cases be eligible to undertake our Language, Literacy & Numeracy (LLN) test. Criteria may change at any time without notice. Additional English language requirements may apply to international applicants from non-English speaking backgrounds wishing to articulate on a visa package into a university programme. Students must be able to (and are required to) enrol, participate, demonstrate progression-of, and complete this course.

BRISBANE CENTRE CAMPUS (316 ADELAIDE ST) COURSE TRAINERS

BRISBANE CENTRE CAMPUS (316 ADELAIDE ST) & FACILITIES

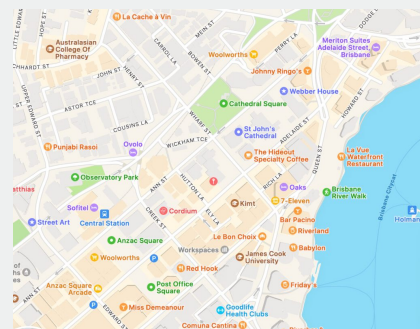
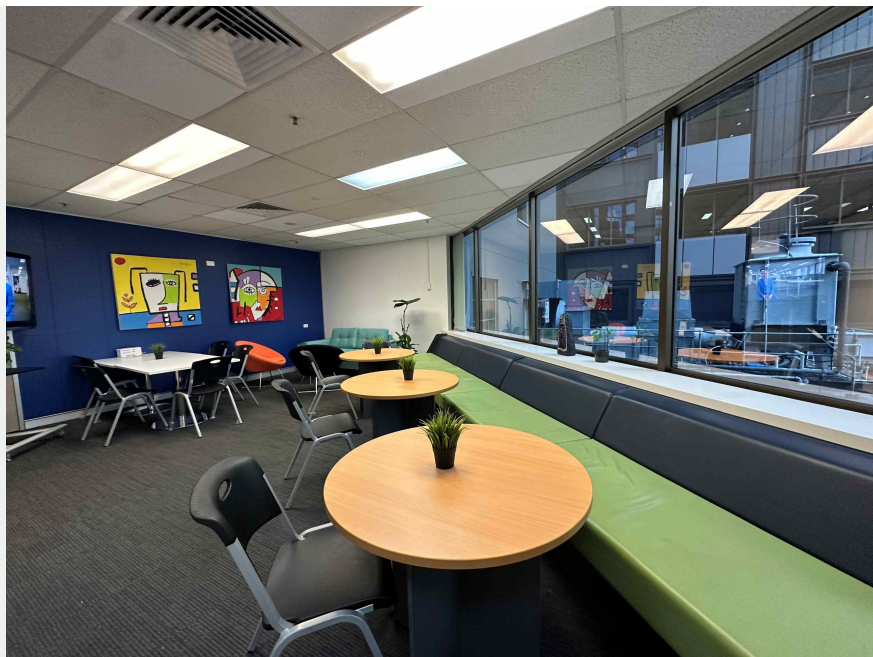
YOUR CAMPUS

EduCare's main campus, known as "Brisbane Centre 2," is strategically situated on level 3 at 316 Adelaide Street, right in the heart of Brisbane's bustling central business district. This premier location offers students unparalleled access to a vibrant urban environment, fostering both academic and professional growth. The campus itself is a testament to EduCare's commitment to providing a superior educational experience, blending modern design with state-of-the-art learning facilities.

Upon entering Brisbane Centre 2, students are greeted by a welcoming and supportive environment. The campus is equipped with spacious classrooms that are designed to encourage interactive learning and collaboration. Each classroom is outfitted with the latest educational technology, including digital whiteboards and high-speed internet, ensuring that teaching and learning are both dynamic and engaging.

A key feature of the campus is its comprehensive multimedia resource library, which provides students with a wealth of learning materials at their fingertips. From academic journals and e-books to interactive software and video content, the library is equipped to support a wide range of learning styles and research needs.

In addition to academic resources, Brisbane Centre 2 offers a variety of student services aimed at enhancing the overall educational journey. These include dedicated study areas, computer labs with specialized software, and comfortable lounge spaces for relaxation and networking. The campus also hosts regular workshops and seminars, led by industry professionals and academic experts, to supplement classroom learning and provide valuable insights into the community services sector.



[316 Adelaide Street, Brisbane 4000](#)

SESSION LOCATIONS

GOLD COAST CENTRE 2 CAMPUS COURSE TRAINERS

GOLD COAST CENTRE 2 CAMPUS & FACILITIES

YOUR CAMPUS

SESSION LOCATIONS