



BUILDING & DESIGN



NATIONAL CODE: CPC30220

CERTIFICATE III IN CARPENTRY

The CPC30220 Certificate III in Carpentry is a nationally recognised Australian trade qualification designed to prepare students for real careers in residential and commercial construction.

CAMPUSES

BRISBANE CENTRE CAMPUS (316 ADELAIDE ST)

OVERVIEW



INTAKES
Quarterly



DURATION
52 weeks



INTERNATIONAL STUDENTS
Yes



CRICOS CODE:
119229B



INDUSTRY PLACEMENT



16

CONTACT HOURS
15

 Blended learning (Part On-Campus & Online)

CERTIFICATE III IN CARPENTRY

About this Course:

This course is designed for people pursuing a career in carpentry across residential and commercial construction. You'll build the practical skills and underpinning knowledge to work safely, interpret plans, measure and set out accurately, select and use tools and materials, and construct, install and repair building components made from timber and other materials. Our carpentry training is hands-on and skills-focused, ensuring students develop confidence using industry-standard tools, equipment and techniques. Throughout the course, we place strong emphasis on workplace health and safety, correct tool use, and the ability to read and interpret plans, drawings and specifications. This approach supports students to build practical capability while developing the foundational knowledge expected of entry-level carpenters working under appropriate supervision. On successful completion, our graduates are equipped with job-ready skills that support employment opportunities across housing, commercial construction, renovation and maintenance sectors.

Career Outcomes

What You'll Learn

- Work Health and Safety (WHS) in Construction
- Use of Carpentry Tools and Equipment
- Reading and Interpreting Plans and Specifications
- Measuring, Setting Out and Levelling
- Calculations for Carpentry (incl. square root)
- Timber and Building Materials Selection
- Cutting, Shaping and Joining Techniques
- Frame and Structural Construction
- Fixing, Fastening and Installation Methods
- Quality Checks, Finishing and Repairs
- Workplace Communication and Teamwork
- Site Documentation and Job Planning

APPRENTICE CARPENTER

CARPENTER (RESIDENTIAL CONSTRUCTION)

CARPENTER (COMMERCIAL CONSTRUCTION)

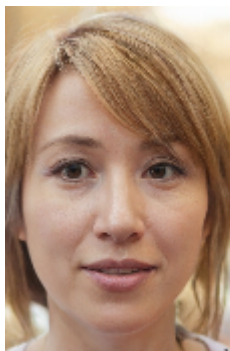
CONSTRUCTION TRADES ASSISTANT

FORMWORK CARPENTER (ENTRY-LEVEL)

FIXING CARPENTER

SITE HAND / CONSTRUCTION LABOURER (CARPENTRY-FOCUSED)

SELF-EMPLOYED CARPENTER (POST-TRADE, WITH EXPERIENCE)



Emily

"The cultural experiences, especially exploring Brisbane and the Gold Coast, were amazing! The tour concierge made the entire experience smooth and enjoyable."



Michael

"The tour was well organized and provided great opportunities for both personal and academic growth. The hands-on learning made all the difference!"

INTAKE DATES

2026

FEBRUARY

Monday, 02nd

APRIL

Monday, 20th

JULY

Monday, 13th

OCTOBER

Monday, 12th

2027

FEBRUARY

Monday, 01st

APRIL

Monday, 12th

JULY

Monday, 12th

OCTOBER

Monday, 11th

2028

FEBRUARY

Monday, 07th

APRIL

Monday, 03rd

JULY

Monday, 03rd

OCTOBER

Tuesday, 03rd

TUITION FEES (DOMESTIC FEE FOR SERVICE)

Course Name	Course Duration	Domestic Fee for Service	Campus Availability	Intakes
Certificate III in Carpentry	52 weeks	\$13,000	BNECTR2	Quarterly

ENTRY REQUIREMENTS

AGE	GRADE	IELTS
18	11	5.0

■ AGE

Minimum age of 18 years or turning 18 years old prior to commencement of the course

■ EDUCATION & EXPERIENCE REQUIREMENTS

Year 11 Australian Senior High School Certificate, or equivalent (e.g. completion of Year 12 or High School in the students home country) with full academic results.

■ ENGLISH LANGUAGE

Upper-Intermediate English (equivalent to 5.0 academic or general IELTS) and successful completion of college LLN Test

■ REQUIRED IDENTIFICATION

Photo ID and evidence of citizenship (international students must provide copy of passport)

■ COMPUTER SKILLS & EQUIPMENT

Students on this course require computer access for learning purposes and to complete course assessments. As such, learners must have beginner/intermediate computing skills including use of Microsoft Office programmes, in addition to hardware requirements of a desktop or portable computer with keyboard, pointing device, speaker, web camera and microphone, and a broadband internet connection.

■ ADDITIONAL REQUIREMENTS

Students must be physically fit to participate in practical workshops and assessments (Practical Assessment), including lifting and carrying heavy objects, as required in the construction industry, while adhering to safe work practices. Completed CPCWHS1001 Prepare to Work Safely in the Construction Industry or its successor and possess a valid White Card prior to commencement of the course. Prior to commencement of the practical workshops, work placement and assessments (Practical Assessment), students must have the following: Personal Protective Equipment (PPE) items including a high visibility vest (a high visibility shirt/jumper is acceptable), hard hat, gloves, earplugs, protective glasses, safety work boots (steel cap), safety glasses (non-tinted), long pants, a long-sleeved shirt (for WHS reasons please do not wear excessively loose clothing), sun protection as required, and two tops and two shirts; and carpentry tools/items including a steel hammer, square, chisel, 10M tape measure, retractable blade trimming knife, pencil hard, safety work boot, 8m tape, carpenter's pencils, soft eraser, biro pens, A4 notebook, and a calculator (square root function required).

■ FURTHER INFORMATION

Students who are unable to meet the academic or English language criteria may in some cases be eligible to undertake our Language, Literacy & Numeracy (LLN) test. Criteria may change at any time without notice. Additional English language requirements may apply to international applicants from non-English speaking backgrounds wishing to articulate on a visa package into a university programme. Students must be able to (and are required to) enrol, participate, demonstrate progression-of, and complete this course.

BRISBANE CENTRE CAMPUS (316 ADELAIDE ST) COURSE TRAINERS



Alessandro Tavian

Alessandro is the Educare Construction Course Trainer and Team Leader. He brings many years of experience in construction, course management, and leading training teams. He previously served as the Trainer Team Leader at Everthought College of Construction and has extensive experience delivering TAFE TAE Training and Assessment programs, as well as in curriculum development.

BRISBANE CENTRE CAMPUS (316 ADELAIDE ST) & FACILITIES

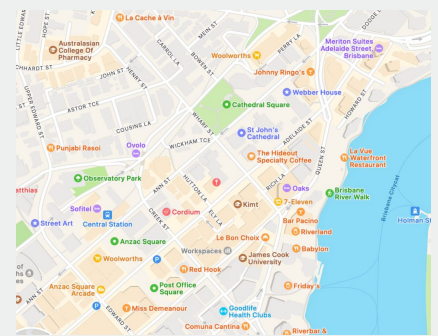
YOUR CAMPUS

EduCare's main campus, known as "Brisbane Centre 2," is strategically situated on level 3 at 316 Adelaide Street, right in the heart of Brisbane's bustling central business district. This premier location offers students unparalleled access to a vibrant urban environment, fostering both academic and professional growth. The campus itself is a testament to EduCare's commitment to providing a superior educational experience, blending modern design with state-of-the-art learning facilities.

Upon entering Brisbane Centre 2, students are greeted by a welcoming and supportive environment. The campus is equipped with spacious classrooms that are designed to encourage interactive learning and collaboration. Each classroom is outfitted with the latest educational technology, including digital whiteboards and high-speed internet, ensuring that teaching and learning are both dynamic and engaging.

A key feature of the campus is its comprehensive multimedia resource library, which provides students with a wealth of learning materials at their fingertips. From academic journals and e-books to interactive software and video content, the library is equipped to support a wide range of learning styles and research needs.

In addition to academic resources, Brisbane Centre 2 offers a variety of student services aimed at enhancing the overall educational journey. These include dedicated study areas, computer labs with specialized software, and comfortable lounge spaces for relaxation and networking. The campus also hosts regular workshops and seminars, led by industry professionals and academic experts, to supplement classroom learning and provide valuable insights into the community services sector.



[316 Adelaide Street, Brisbane 4000](#)

SESSION LOCATIONS



BNECTR2 - ROOM 1

DIGITAL WHITEBOARD

HIGH-SPEED WI-FI

SMART TV

Welcome to our second home in the heart of Brisbane's vibrant CBD — a place where curiosity, care, and creativity come together.

Step into Room 1, the nurturing home of many of our vocational programmes. Here, future professionals are inspired to shape the industry and make a lifelong difference. Every corner of this space is designed to spark imagination and connection — where lessons go beyond theory and transform into meaningful, hands-on experiences.

With state-of-the-art learning environments, a warm community spirit, and a focus on real-world impact, Room 1 is more than just a classroom — it's where the next generation of professionals begin their journey to inspire, guide, and build brighter futures.

[VIEW IN MAP](#)

